

SEMI-AUTOMATIC DICING SAW

SS10

*New standard for the semi-automatic dicer
with new operability*

Smallest class and Fastest 6-inch dicing machine

Realized the high throughput
and the reduced footprint at
the same time.

Auto alignment

The image-processing engine
accommodates variety of work.

High performance spindle

1.8 kw 60,000 rpm

User Friendly

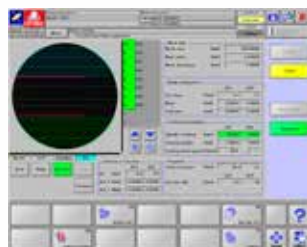
Improved operability with the
17-inch touch panel screen



TOKYO SEIMITSU

Main Features

- 1 Corresponds to various types of workpieces as standard
- 2 Standard Spindles up to 60,000 rpm
- 3 Enhanced throughput
X axis 750mm/sec, Y axis 180 mm/sec, and Z axis 80 mm/sec
- 4 17" LCD touch panel and new GUI
(Graphical User Interface)
with simple layout and large touch-buttons allow users' interactive operation
- 5 Easy and simple
Kerf check function
(AI kerf check function)
- 6 Stores over 10,000 recipes
- 7 USB port as standard option
(USB memory device can be used as external memory)
- 8 Optimized vacuum controller
reduces 50% of air consumption compared with existing model



▲ New GUI

Specifications

Max. work size		Φ 6 inch, □ 152 mm
Max. number of frames		6 inch
Spindle	Rotation	60,000 min-1
	Max. blade diameter	Φ 60 mm (2-Inch)
	Rated Output	1.8 kW
X axis	Available cutting range	160 mm
	Max. Speed	750 mm/sec
Y axis	Available cutting range	162 mm
	Max. Speed	180 mm/sec
	Accuracy	0.005 mm / 162 mm
Z axis	Stroke	35 mm
	Max. Speed	80 mm/sec
	Repeatability	0.001 mm
θ axis	Range of rotation	320°
Misc	Voltage	3 Phase AC200 to 220 V ±10 % (Transformer adoptable)
	Power consumption	4.0 kVA (MAX)
	Air pressure	0.55 to 0.7 MPa
	Avg. Air consumption	180 L/min (0.55 MPa)
	Cutting Water, and others (pressure)	0.3 to 0.5 MPa
	Cutting Water, and others (Max Flow)	2.0 L/min
	Cooling Water (pressure)	0.3 to 0.5 MPa
	Cooling Water (Max Flow)	1.9 L/min (0.3MPa)
Exhaust	3 m ³ /min more	
Size (W*D*H)		495 mm×880 mm×1715 mm
Weight		389 kg

Operability

Improved the operability with 17" touch panel.

